

WP4 Task 4.2. Engaging with market actors and developing funding proposal

**Project proposal: «Development of 10 mobility points in Riga
Metropolitan Area»**

Partner meeting, 23rd April, 2021

Aija Zučika (RIGA PLANNING REGION)

The project overall objective is development of smart and sustainable mobility hub system in Riga Metropolitan area to encourage sustainable modal shift towards public transport.

Main expected results:

- *improved or new railway and public transport smart & digital station infrastructure;*
- *new public transport, private car and micromobility charging infrastructure;*
- *improved accessibility and energy-efficiency.*

- ***Mobility hubs** will integrate railway station, public transport stops, P&R, B&R facilities in one single mobility hub that will allow travellers & commuters) to change one transport mode to another in a very fast and convenient way.*
- ***The project will increase** public transport, notably railway use and reduce private car use in daily mobility, thus reducing air pollution and CO2 emissions and enhance more sustainable mobility habits in Riga Metropolitan area.*

Selected 54 MH – 13 priority

Urban	Rīga	Mobility Hub Rīga Zemītani development
Regional	Adazi	Mobility Hub Carnikava development
Urban	Rīga	Mobility Hub Rīga Jugla (Alfa) development
Regional	Ogre	Mobility Hub Ikskile development
Regional	Ogre	Mobility Hub Ogre development
Regional	Ogre	Mobility Hub Kegums development
Regional	Marupe	Mobility Hub Tiraine development
Regional	Olaine	Mobility Hub Olaine development
Urban	Rīga	Mobility Hub Rīga Zaslauks development
Urban	Rīga	Mobility Hub Rīga Imanta development
Regional	Jurmala	Mobility Hub Jurmala Bulduri development
Regional	Jurmala	Mobility Hub Jurmala Sloka development
Regional	Tukums	Mobility Hub Tukums I development

1	Urban	Rīga	Mobility Hub Rīga Zemītani development
2	Urban	Rīga	Mobility Hub Rīga Dauderi development
3	Urban	Rīga	Mobility Hub Rīga Ziemeļblāzma development
4	Regional	Adazi	Mobility Hub Carnikava development
5	Regional	Saulkrasti	Mobility Hub Saulkrasti development
6	Regional	Saulkrasti	Mobility Hub Skulte II development
7	Regional	Līmbaži	Mobility Hub Salacgrīva development
8	Urban	Rīga	Mobility Hub Rīga Jugla (Alfa) development
9	Regional	Adazi	Mobility Hub Baltezers development
10	Regional	Ropazi	Mobility Hub Garkalne development
11	Regional	Ropazi	Mobility Hub Vangazi development
12	Regional	Sigulda	Mobility Hub Incuļkalns development
13	Regional	Sigulda	Mobility Hub Sigulda development
14	Regional	Cēsis	Mobility Hub Līgatne development
15	Regional	Cēsis	Mobility Hub Cēsis development
16	Regional	Valmiera	Mobility Hub Valmiera development
17	Urban	Rīga	Mobility Hub Rīga Janavardi development
18	Urban	Rīga	Mobility Hub Rīga Skīrotava development
19	Urban	Rīga	Mobility Hub Rīga Rumbula development
20	Regional	Salaspils	Mobility Hub Salaspils development
21	Regional	Ogre	Mobility Hub Ikskile development
22	Regional	Ogre	Mobility Hub Jaunogre development
23	Regional	Ogre	Mobility Hub Ogre development
24	Regional	Ogre	Mobility Hub Kegums development
25	Regional	Aizkraukle	Mobility Hub Aizkraukle development
26	Regional	Aizkraukle	Mobility Hub Koknese development
27	Regional	Aizkraukle	Mobility Hub Pļavinas development
28	Regional	Kekava	Mobility Hub Kakava development
29	Regional	Kekava	Mobility Hub Baldone development
30	Regional	Bauska	Mobility Hub Iecava development
31	Regional	Bauska	Mobility Hub Bauska development
32	Urban	Rīga	Mobility Hub Rīga Tornakalns development
33	Urban	Rīga	Mobility Hub Rīga Ziepniekkalns development
34	Regional	Marupe	Mobility Hub Tiraine development
35	Regional	Kekava	Mobility Hub Balozi development
36	Regional	Olaine	Mobility Hub Jaunolaine development
37	Regional	Olaine	Mobility Hub Olaine development
38	Regional	Ozolnieki	Mobility Hub Dalbe development
39	Regional	Jelgava	Mobility Hub Ozolnieki development
40	Regional	Jelgava	Mobility Hub Jelgava development
41	Regional	Dobele	Mobility Hub Dobele development
42	Urban	Rīga	Mobility Hub Rīga Zaslauks development
43	Urban	Rīga	Mobility Hub Rīga Imanta development
44	Regional	Jurmala	Mobility Hub Jurmala Bulduri development
45	Regional	Jurmala	Mobility Hub Jurmala Majori development
46	Regional	Jurmala	Mobility Hub Jurmala Sloka development
47	Regional	Tukums	Mobility Hub Smarķi development
48	Regional	Tukums	Mobility Hub Tukums I development
49	Regional	Tukums	Mobility Hub Kandava development
50	Regional	Marupe	Mobility Hub Marupe development
51	Regional	Stopiņi	Mobility Hub Saurieši development
52	Urban	Rīga	Mobility Hub Dreļīni development
53	Urban	Rīga	Mobility Hub Bolderāja/Daugavgrīva development
54	Urban	Rīga	Mobility Hub Spice development



Project implementation

Work have to be divided in two main parts:

- 1) The infrastructure of railway*
- 2) The infrastructure not connected to the railway*

*The following activities will be performed at each site -
at each mobility point:*

- 1) Project design*
- 4) Construction*
- 5) Author supervision*
- 6) Construction supervision*



Scope of the project

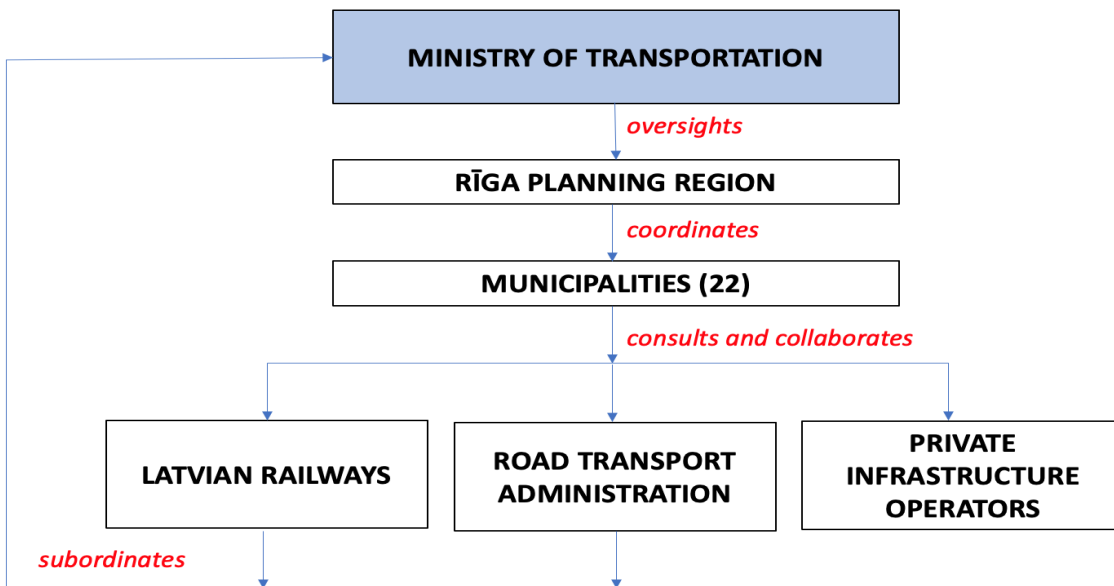
- *Development of Riga metropolitan area / national transport model*
- *Detailed study of mobility points (research project)*
- *Feasibility study*
- *Development of guidelines / standard for designing mobility points*
- *Construction design*
- *Development of procurement documentation*
- *Centralized project implementation unit*
- *(Development of sustainable mobility / climate & energy plans)*



ELENA support:

- *Energy audits*
- *Feasibility study*
- *Financial engineering*
- *Marketing*
- *Stakeholder involvement*
- *High-level technical studies*
- *Procurement process*





Investment programme is structured in following categories

- 1. Modernisation/digitalisation of public transport hubs, railway stations – smart stations, smart platforms, shared mobility infrastructure;*
- 2. E-charging infrastructure for public transport, private cars (in P&R and shared mobility areas) and micromobility (in B&R areas);*
- 3. Intelligent transport system – digital integrated real-time travel information system, smart ticketing system, smart-phone applications for mobility hub users, etc.*
- 4. Smart energy infrastructure – smart / energy efficient lighting system, local renewable electric generation units, etc.*

Project development services (PDS)	EUR 2 574 000
Project implementation	EUR 127 882 503
Incl. Modernisation of public transport stations	EUR 97 097 503
Incl. E-charging infrastructure	EUR 3 693 000
Incl. Intelligent transport system	EUR 15 054 000
Incl. Smart-energy savings	EUR 12 038 000

	Q2 2022	Q3 2022	Q4 2022	Q1 2023	Q2 2023	Q3 2023	Q4 2023	Q1 2024	Q2 2024	Q3 2024	Q4 2024	Q1 2025	Q2 2025	Q3 2025	Q4 2025
Energy Audits							D								
Feasibility studies							D								
Technical studies															D
Financial engineering															D
Marketing															D
Stakeholders and community engagement															D
Tenders process														D	
Project Implementation Unit															D



Thank you!

Aija Zučika

Project coordinator at Riga Planning Region