

Sacred Sites in Latvia

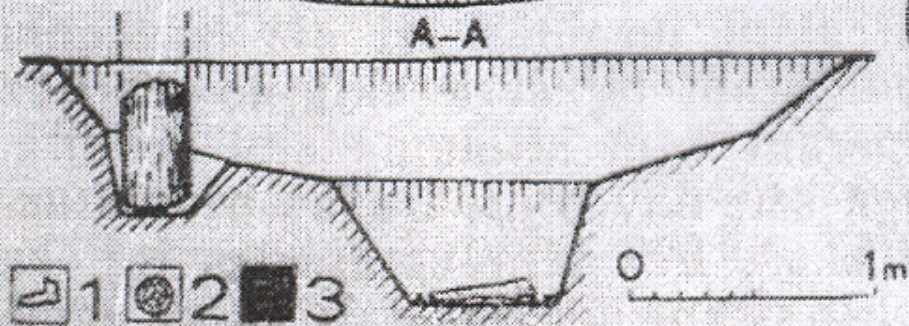
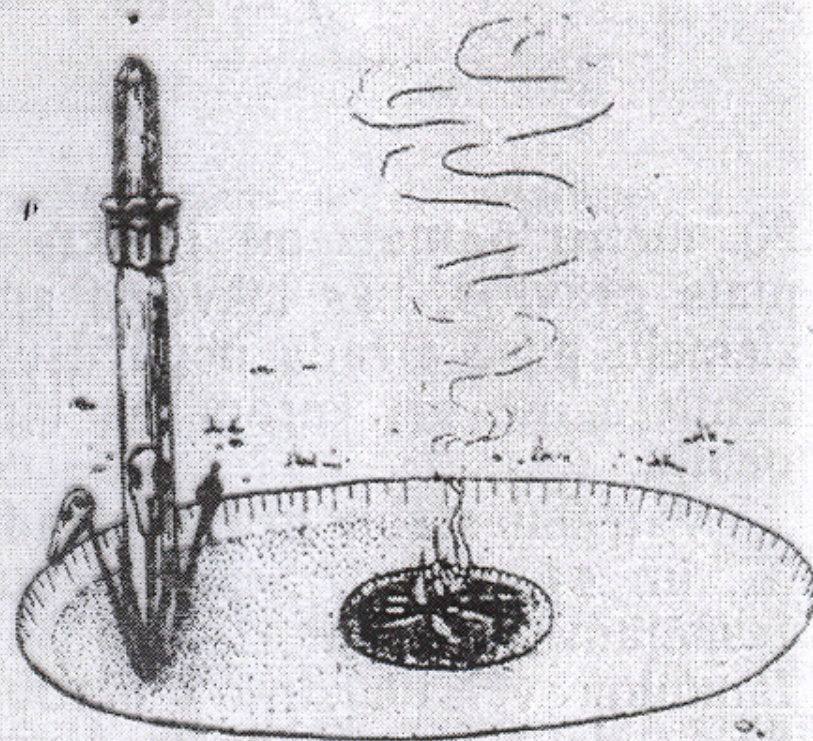
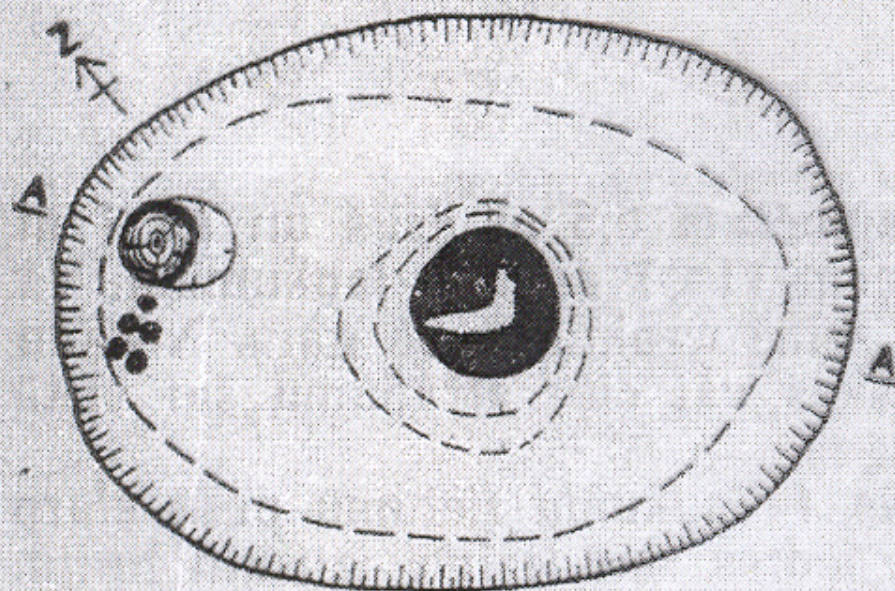
Juris Urtāns

Tartu

27.05.2011.

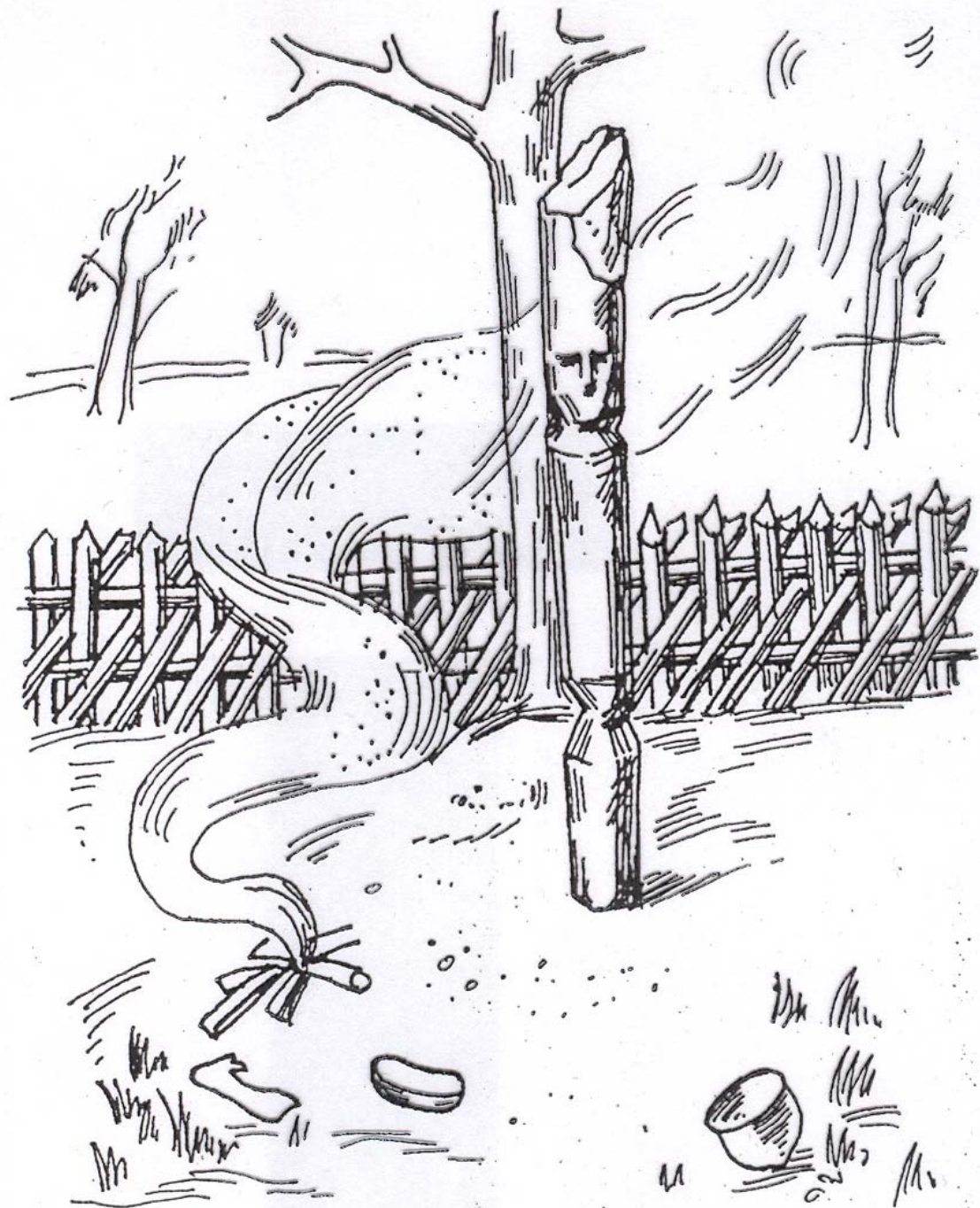
- Latvia place-names traditionally regarded as identifying ancient cult sites are those including the words:
 - ‘holy’ (*svēts*)
 - ‘offering’ (*upuris*)
 - ‘church’ (*baznīca*)
 - ‘devil’ (*velns*)
 - ‘sun’ (*saule*)
 - ‘god’ (*dievs*)
 - ‘idol’ (*elks*)
 - ‘health’ (*veselība*)
 - ‘thunder’ (*pērkons*)
 - deity *Jānis*
 - deity *Māra*
 - deity *Laima*

- **Geomorphological objects**
- **Waters**
- **Trees and groves**
- **Stones and stone settings**



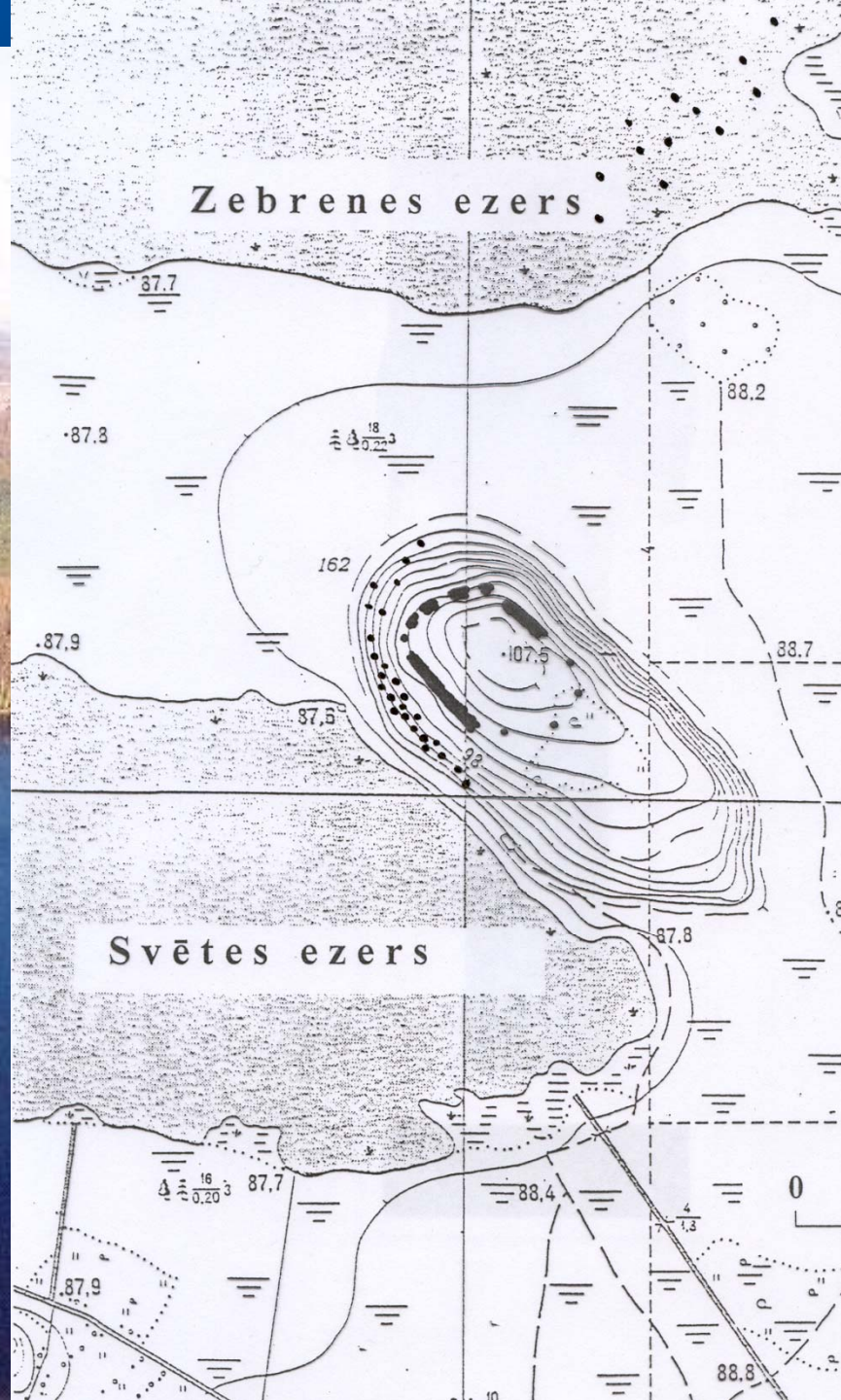
4. att. Ziedojuņu vieta — bedre ar ugunskuru centrā. Plāns, griezumā un
rekonstrukcija.

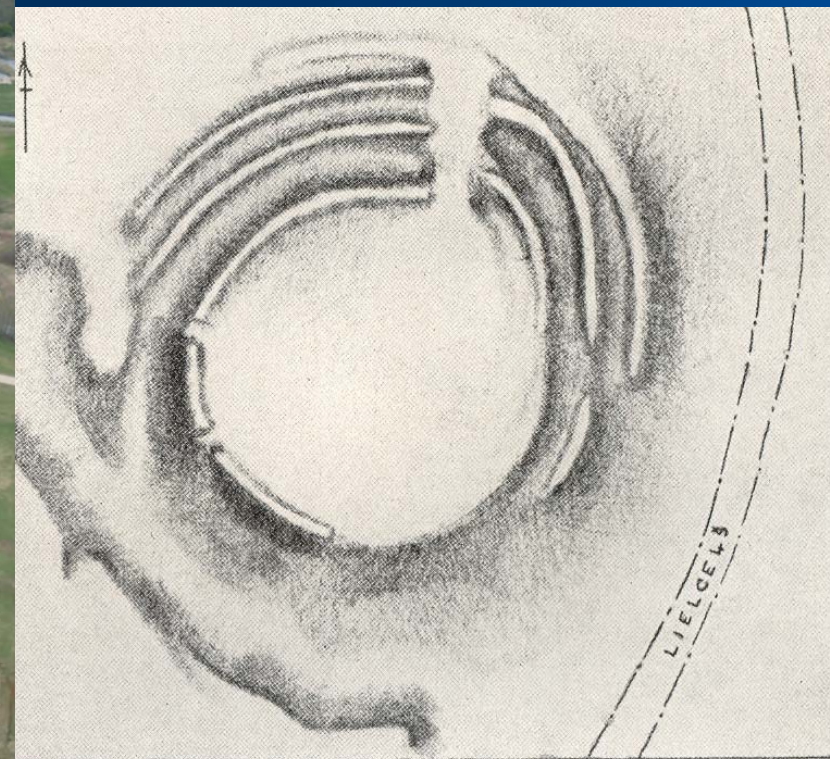
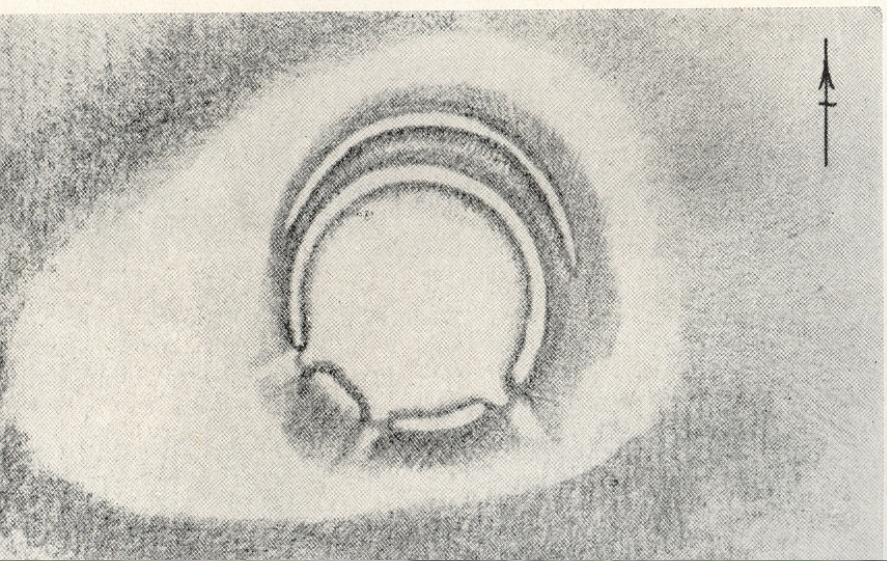
1 — kauls, 2 — koks, 3 — ogles



Geomorphological objects

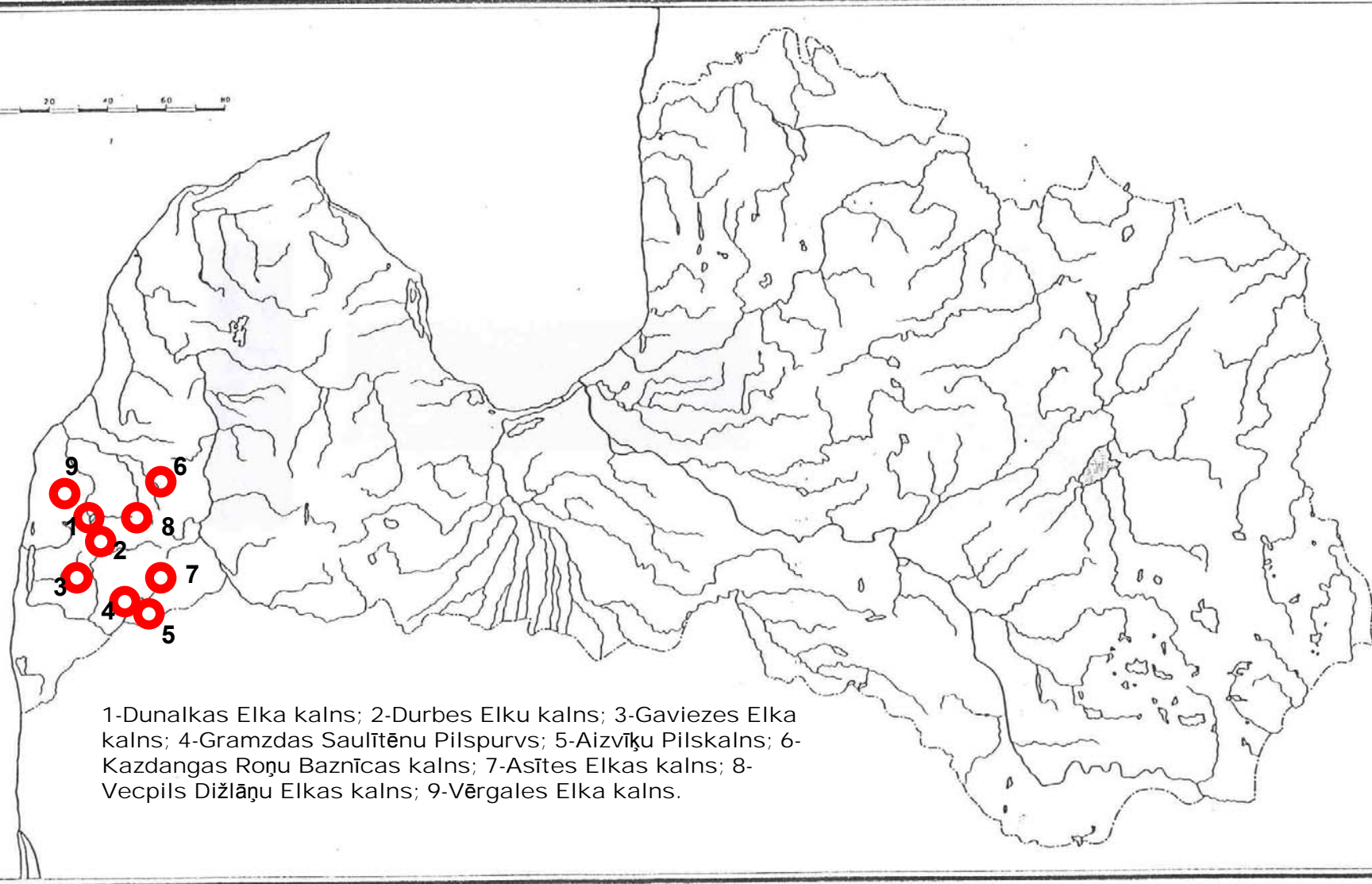
- Hills (clifs)
- Ravines (walleys)
- Meadows (fields)
- Islands (peninsulas)
- Caves





18. Der Alkhügel „Elka kalns“ bei Dunalka, Kr. Liepāja.

0 20 40 60 80



1-Dunalkas Elka kalns; 2-Durbes Elku kalns; 3-Gaviezes Elka kalns; 4-Gramzdas Saulītēnu Pilspurvs; 5-Aizvīķu Pilskalns; 6-Kazdangas Roņu Baznīcas kalns; 7-Asītes Elkas kalns; 8-Vecpils Dižlāņu Elkas kalns; 9-Vērgales Elka kalns.

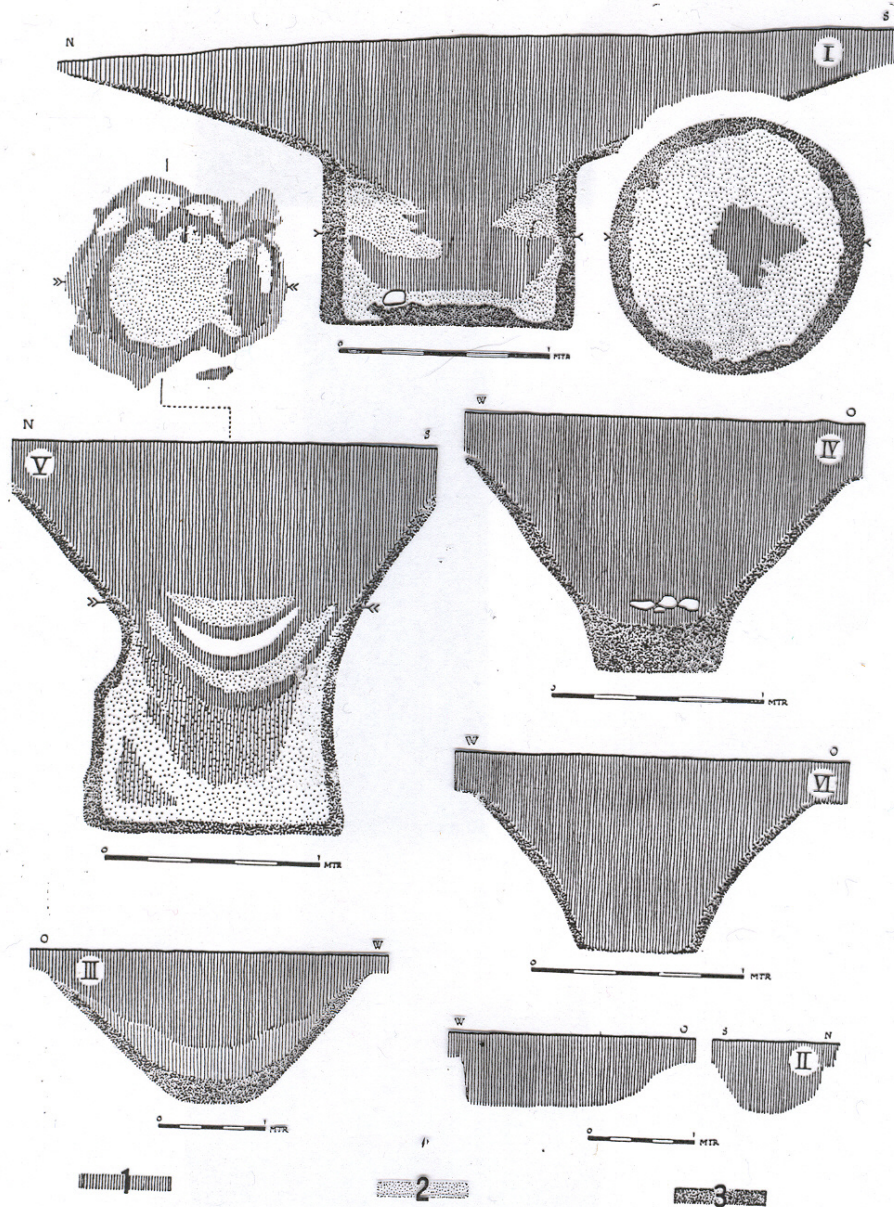
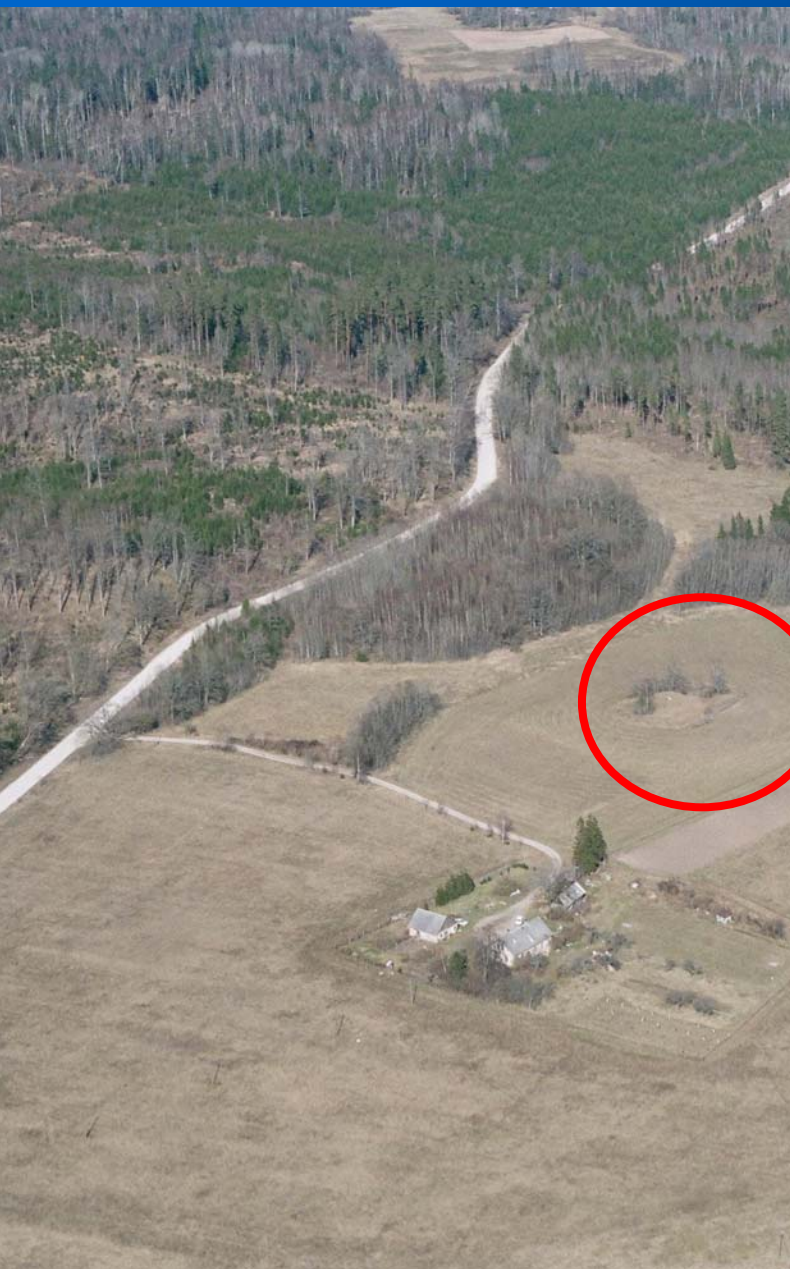


Abb. 7. Querschnitte der Opfergruben des Alkhügels in Strazde (Legende: 1 — schwarze Füllerde, 2 — hellbraune Füllerde, 3 — dunkelbraune Kiesschicht).



Svētciema
Lībiešu
Upuralas
1839.g.

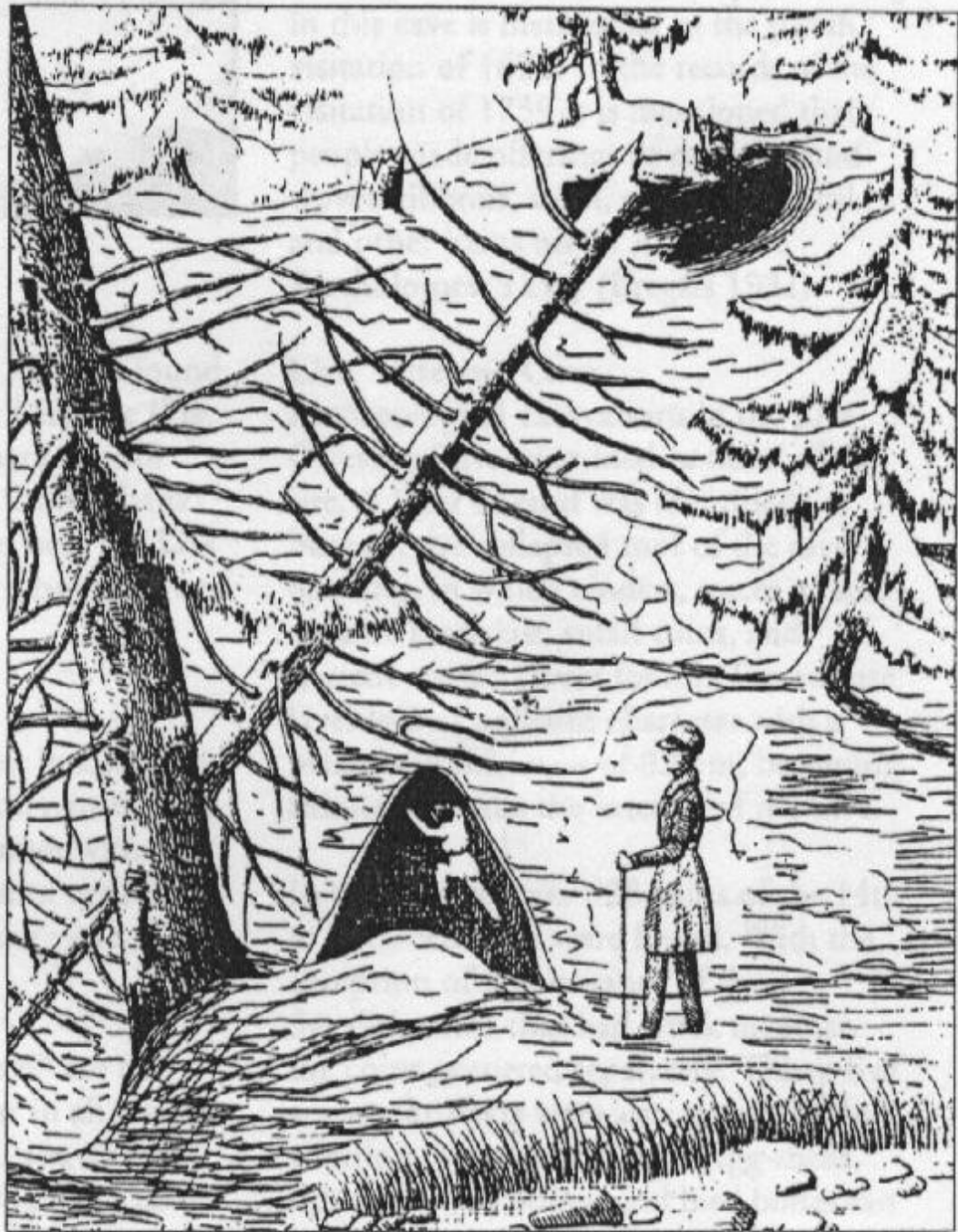
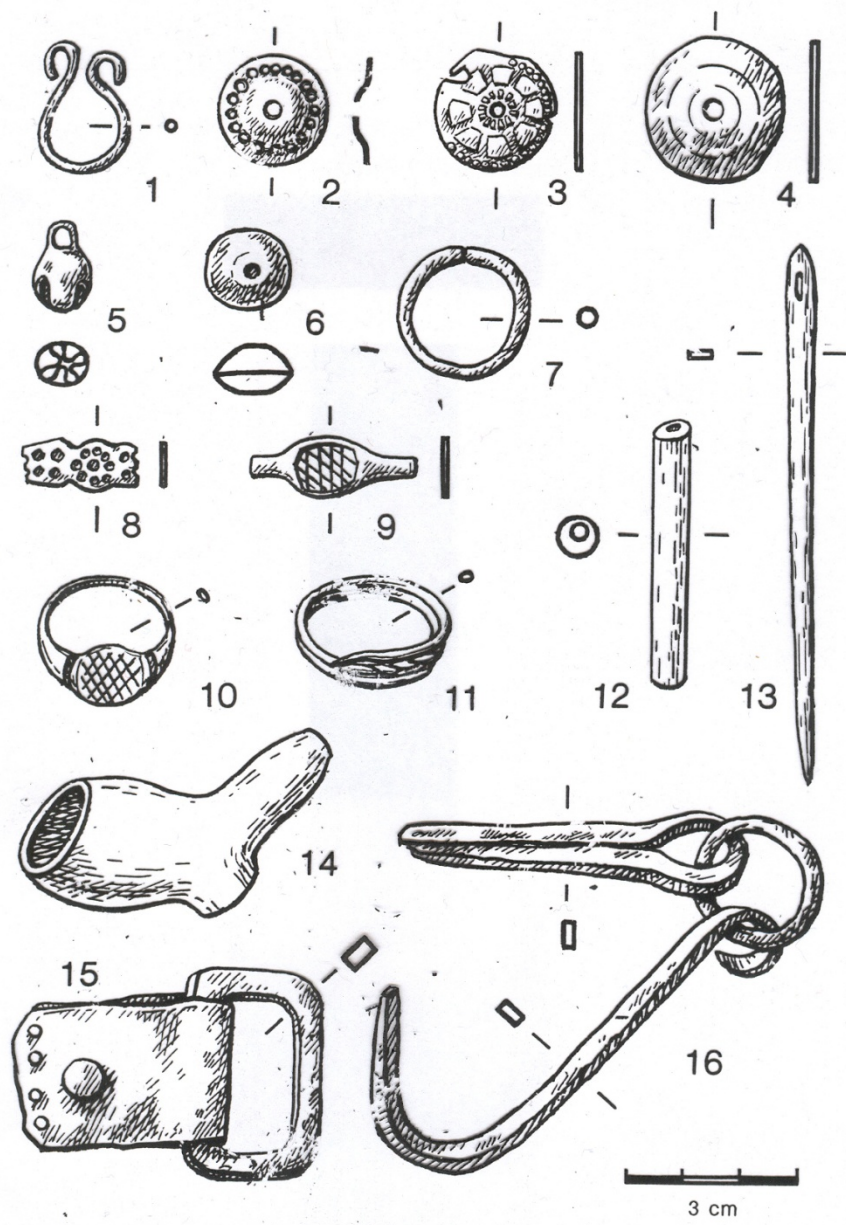


Figure 1: The Livs' Offering Cave (after Kruse 1842)





Libiešu Upurālas Zviedrijas 1 šres Klīpe, 1630.g.
Limbažu raj. Salacas c.p.



Libiešu Upurālas, Livonijas Tallinas 15.gs.1.puses feniņš, Pleskavā
Fjodora Ivanoviča (1584.-1598.) dēģa
Limbažu raj. Salacas c.p.



Libiešu Upurālas, Tērbatas bīskapijas Dītriha III Damerova (1379.-
1400.) artīgs, Rīgas šiliņa ar Kārļa XI monogramu viltojums
Limbažu raj. Salacas c.p.



Waters

- **Lake (pond)**
- **River (creek, rapid)**
- **Bog**
- **Spring**



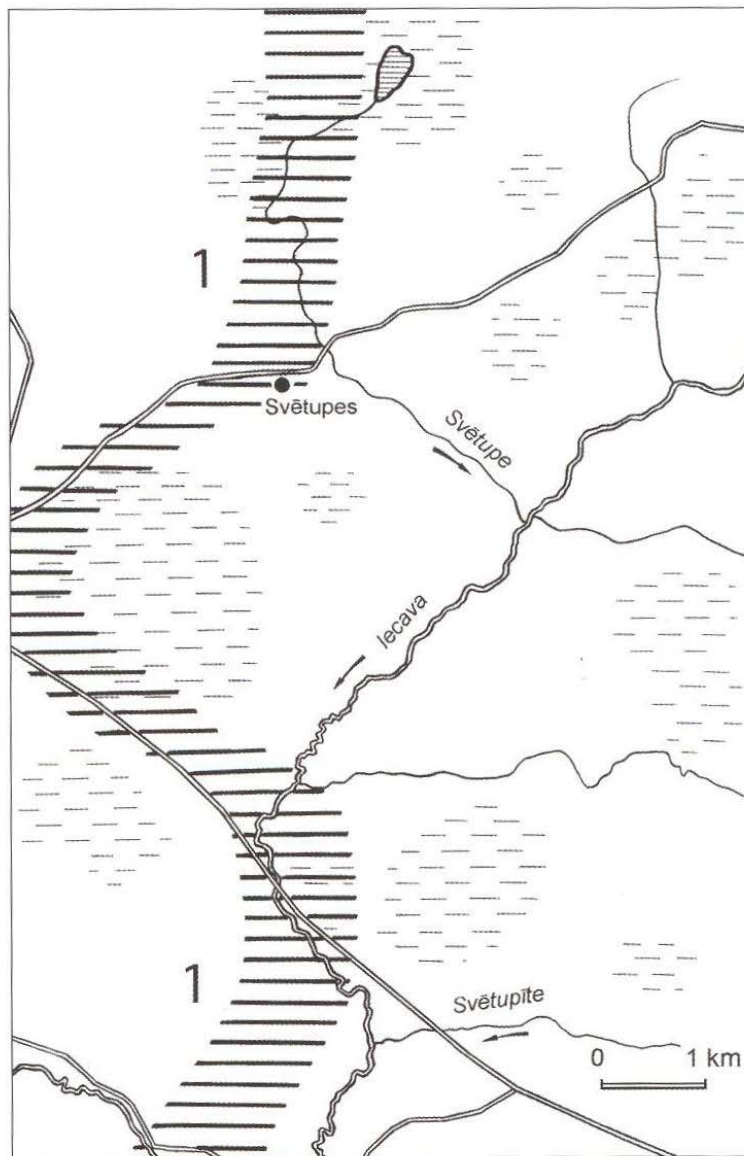


Svente, Svētā upe, Sventa



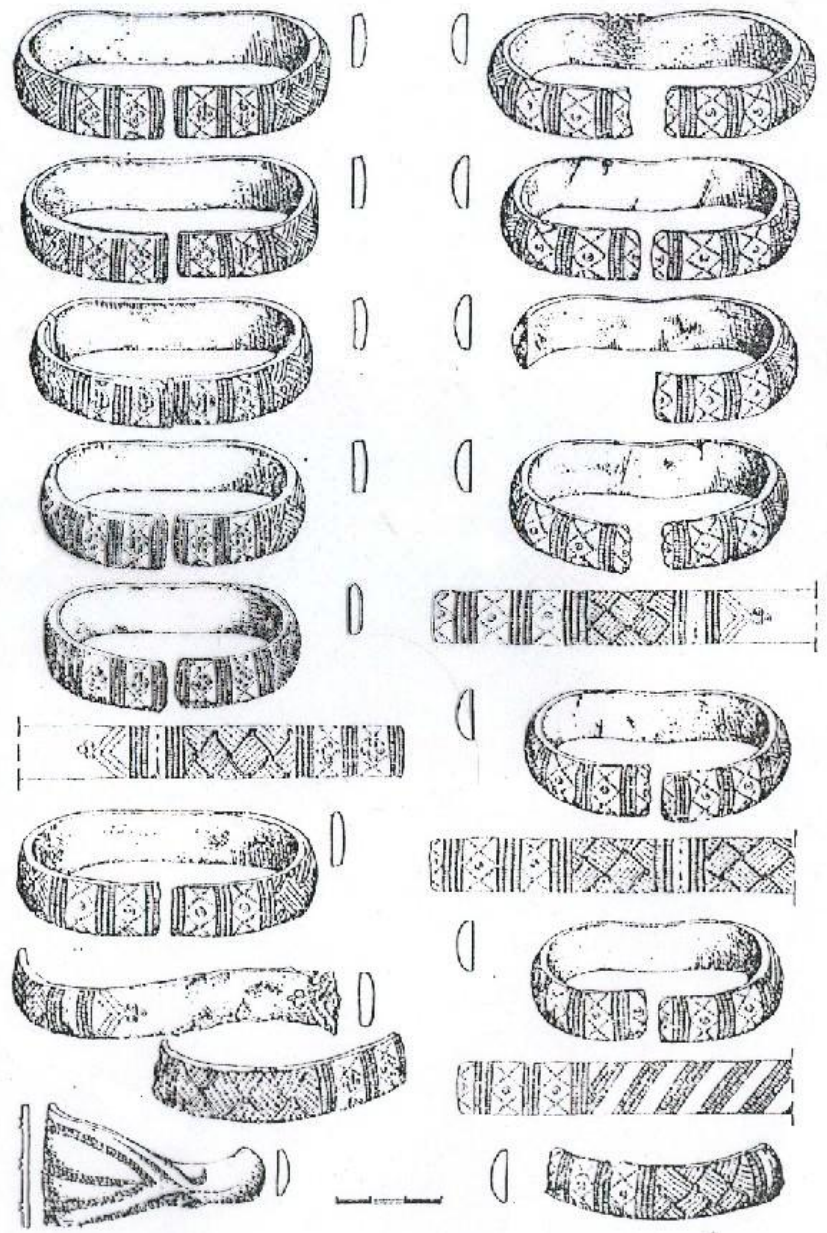
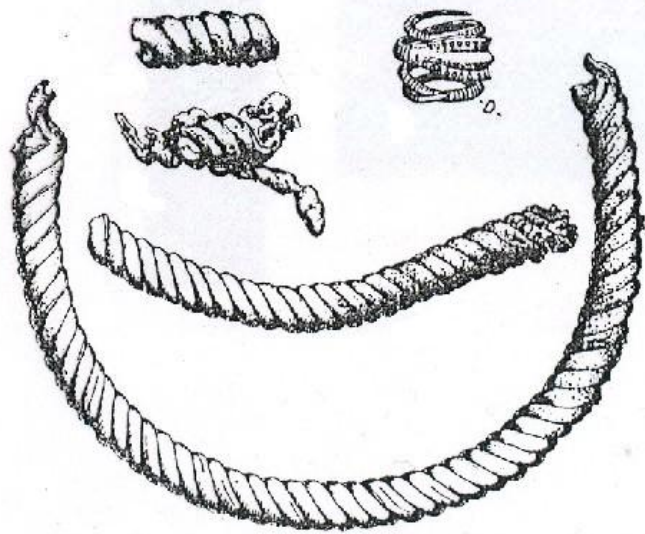
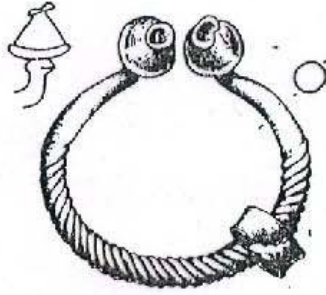
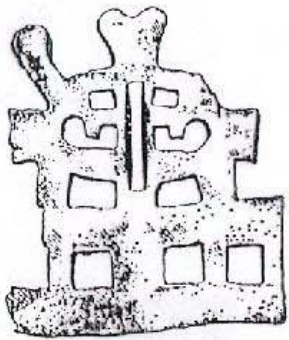
Svētupīte, Svēte





The situation of the Svētupe and Svētupīte, tributaries of the Iecava. 1 – possible boundary of Semigallia.





Trees and groves









Stones and stone settings

- **Natural boulders**
- **Foot mark stones**
- **Stones with holes**

Matkules Zāģeru
Velna akmens



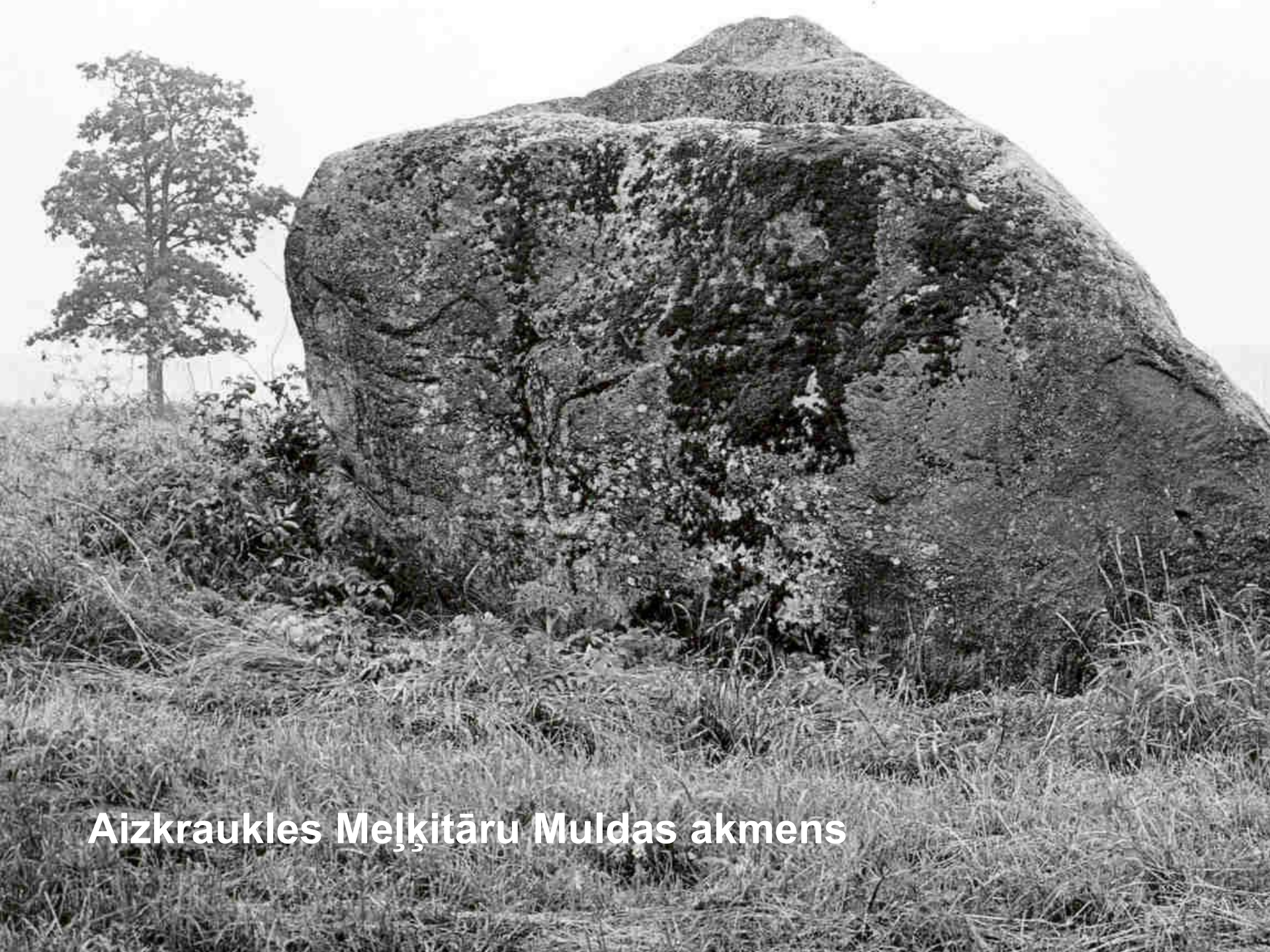
**Kokneses Pastamuižas Velna
akmens**











Aizkraukles Melķitāru Muldas akmens



Aizkraukles Meļķitāru Muldas akmens







Maznodupju akmeņu konstrukcija ar izpētītajiem izrakumu laukumiem

Thank you.....

